

RoHS

版本	变更事项	依据	变更日期
REV A0	CHANGE CONTENT	THEREUNDER	DATE

技术要求:  
Technical requirement

一. 电气性能:  
electrical performance

- 1-1. 额定电流: 1A AC DC.  
rated current: 1A AC DC.
- 1-2. 接触电阻:  $\leq 20m\Omega$   
Contact resistance:  $\leq 20m\Omega$
- 1-3. 绝缘电阻:  $\geq 1000M\Omega$   
Insulation resistance:  $\geq 1000M\Omega$
- 1-4. 耐压: 550V AC/Minute  
withstand voltage: 550V AC/Minute

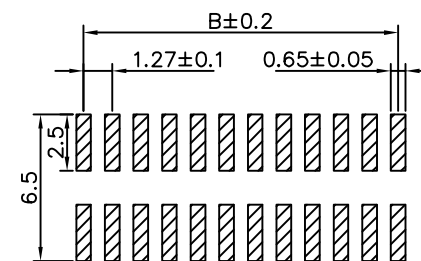
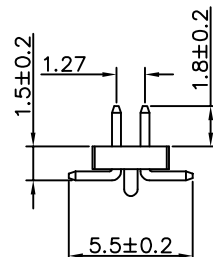
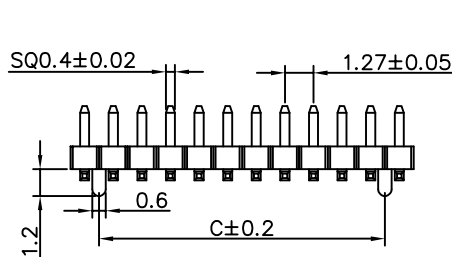
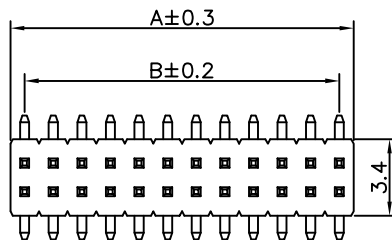
二. 物理特性:  
Physical characteristics

- 2-1. 环境温度:  $-25^{\circ}C \sim 105^{\circ}C$   
environmental temperature:  $-25^{\circ}C \sim 105^{\circ}C$
- 2-2. 焊接温度:  $+260^{\circ}C$ , 10s max  
welding temperature:  $+260^{\circ}C$ , 10s max

三. 材质:  
Material

- 3-1. 塑胶: PA6T(Black) UL94V-0  
plastic: PA6T(Black) UL94V-0
- 3-2. 插针: 黄铜/镀金  
pin: Brass/Gold plated

PIN	A	B
2x2A	2.54	1.27
2x3A	3.81	2.54
2x4A	5.08	3.81
2x5A	6.35	5.08
2x6A	7.62	6.35
2x7A	8.89	7.62
2x8A	10.16	8.89
2x9A	11.43	10.16
2x10A	12.70	11.43
2x11A	13.97	12.70
2x12A	15.24	13.97
2x13A	16.51	15.24
2x14A	17.78	16.51
2x15A	19.05	17.78
2x16A	20.32	19.05
2x17A	21.59	20.32
2x18A	22.86	21.59
2x19A	24.13	22.86
2x20A	25.40	24.13
2x21A	26.67	25.40
2x22A	27.94	26.67
2x23A	29.21	27.94
2x24A	30.48	29.21
2x25A	31.75	30.48
2x26A	33.02	31.75
2x27A	34.29	33.02
2x28A	35.56	34.29
2x29A	36.83	35.56
2x30A	38.10	36.83
2x31A	39.37	38.10
2x32A	40.64	39.37
2x33A	41.91	40.64
2x34A	43.18	41.91
2x35A	44.45	43.18
2x36A	45.72	44.45
2x37A	46.99	45.72
2x38A	48.26	46.99
2x39A	49.53	48.26
2x40A	50.80	49.53
2x41A	52.07	50.80
2x42A	53.34	52.07
2x43A	54.61	53.34
2x44A	55.88	54.61
2x45A	57.15	55.88
2x46A	58.42	57.15
2x47A	59.69	58.42
2x48A	60.96	59.69
2x49A	62.23	60.96
2x50A	63.50	62.23



P.C.B LAYOUT

3	包装	<input checked="" type="checkbox"/> 袋装 <input type="checkbox"/> 管装 <input type="checkbox"/> 卷装 <input type="checkbox"/> 盒装	1	PCS
2	塑胶	PH1.27*1.0 2*50P带内柱 PA6T料	1	PCS
1	方针	0.4x5.0mm 黄铜镀金G/F	/	PCS
ITEM	PART NAME	DESCRIPTION	QUAY	UNIT

		单位	mm	泰华电子有限公司	
		比例		TaiHua Electronics Co., Ltd	
		核准:	版本: A0	产品名称	PH1.27mm 排针 G/F SMT
		审核:	页次: 1/1	产品料号	
		制图: 吕灿东	日期:	客户料号	